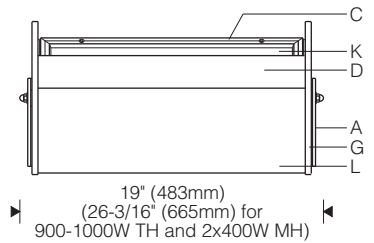
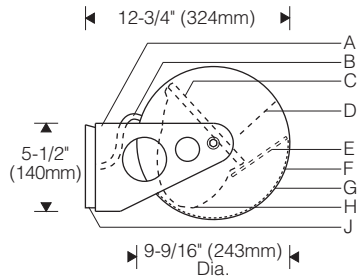
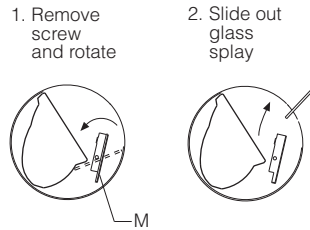


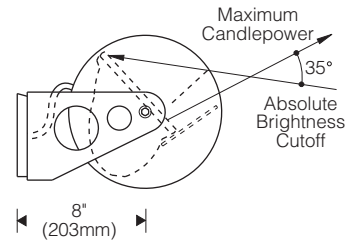
Style 137 1:12 Scale



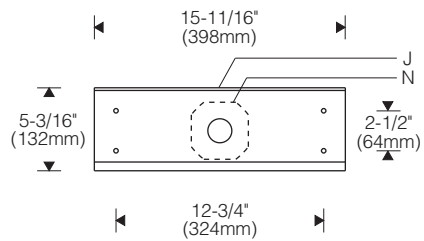
Splay Assembly (Luminous housing)



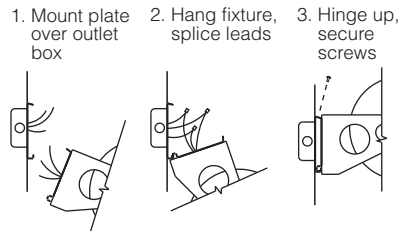
Radial Baffle



Mounting Plate



Installation



Specifications

- | | | | |
|---|---|---|--|
| A Aluminum yoke | D Radial blade baffle, black on bottom, diffuse on top | F Translucent insert (L1 luminous housing) | K Micro-prismatic tempered glass lens |
| B Braided stainless steel cable sleeving (bright) | E Splay - translucent tempered glass for L1 luminous housing; white aluminum for P1 non-luminous housing | G Spun aluminum end plates | L Perforated rolled aluminum housing |
| C Mitred extruded aluminum door frame with silicone gasket | | H Specular extruded aluminum reflector | M Hinged glass splay |
| | | J Steel mounting plate | N Outlet box (by others) |

Finish:

Perforated rolled aluminum housing. Bright clear anodized aluminum housing and end plates with brushed aluminum yoke. Door frame, internal end plates and mounting plate are finished black.

L1 finish - illuminated housing with translucent glass splay and non-yellowing translucent insert behind perforations for diffuse glow. Splay is hinged and removable for cleaning.

P1 finish - non-illuminated housing with white aluminum splay.

Painted surfaces - 6 stage pretreatment and electrostatically applied thermoset powder coat for stable, long lasting and corrosion resistant finish.

Reflector and internal end plates - extruded high purity aluminum with clear anodized specular finish. All luminaire hardware - stainless steel.

Mounting:

Mounting plate covers recessed outlet box (by others) and forms reveal at wall. Suitable support required (by others). Fixture hinges on plate for hands-free access to splices.

Electrical:

Use 90°C wire for supply connections.

Tungsten halogen - recessed single contact (RSC) lampholders in patented clamping supports for maximum heat dissipation.

Metal halide - remote encapsulated constant wattage autotransformer (CWA) ballast. Mogul lampholder is position oriented for use with either POMB horizontal or universal position lamp. Rotating bracket allows horizontal lamp to be locked in proper position after aiming. 175W supplied with medium base lampholder. End-of-lamp aligner ensures consistent optical performance.

For complete ballast specifications, see Accessories Section.

Standard:

UL listed or CSA certified for damp locations. (Style 107/108 extruded cylinder recommended for damp locations.) 2x400W MH units suitable for upright orientation only.

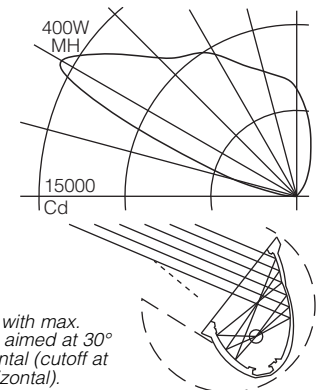
Features

- Distinctive perforated housing in bright clear anodize with styled brushed aluminum yoke
- Luminous perforated housing with optional translucent glass splay - removes for cleaning
- Round end plate - consistent profile regardless of aiming
- Radial baffle - provides shielding within the cylindrical form



Performance

Two parabolic reflector sections drive light across the ceiling from one edge. An elliptical section shields the lamp from normal viewing angles and redirects its light to a parabola. Glare is minimized and asymmetry of the beam is maximized resulting in high beam efficiency and superior surface uniformity.



Note: Shown with max. candlepower aimed at 30° above horizontal (cutoff at 5° below horizontal).

For complete photometrics, visit www.elliptipar.com

elliptipar

