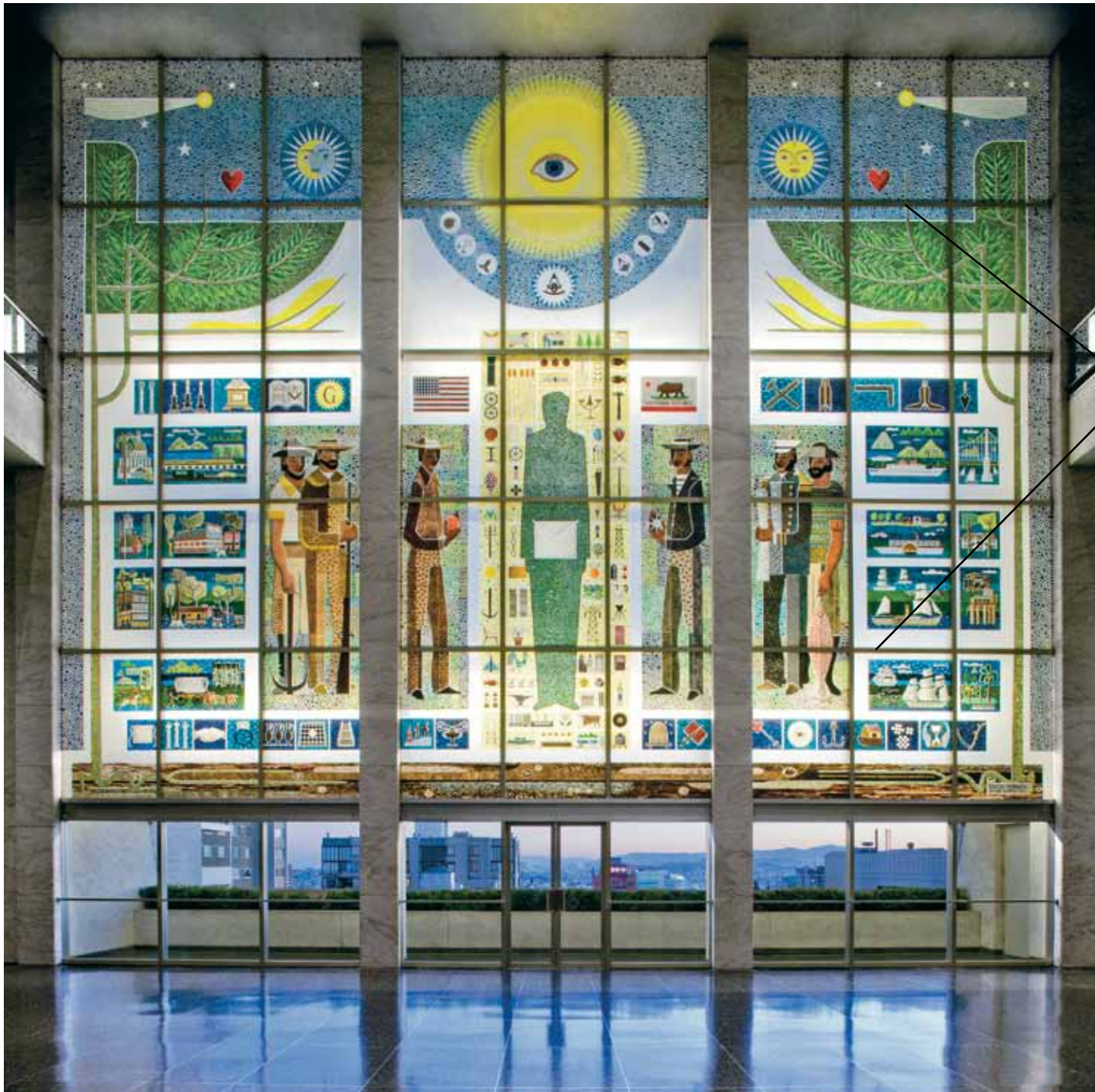


# Masonic Memorial Temple Mural, San Francisco, CA



**Style F164  
backlighting  
mural**

## **Stained Glass Mural**

Dimensions:  
38' tall x 48' wide

Lighting: (24) F164-T255-  
H-07-2-VX-0 (8' units)  
with modified HBA and  
HBB hangers, mounted  
in two back-to-back  
horizontal rows

Estimated illuminance:  
60 fcaI on back of glass

Estimated power density:  
1.6 W/sf of art

**Architect:**  
ARG Conservation Services

**Lighting Design:**  
Alice Prussin

**Photography:**  
David Wakely

## elliptipar Style F164

Commissioned in 1955, the Masonic Temple mural is a 38 ft. by 48 ft. depiction of the wayfarers and seafarers who helped found California Freemasonry. Designed by artist Emile Norman, the mural incorporates thousands of pieces of natural material such as seashells, grass, soil, foliage and thinly sliced vegetable matter along with bits of metal and 180 different colors of stained glass. In an artistic technique known as endomosaic, the material in Norman's design is sandwiched between acrylic sheets glued together and soldered into frames.

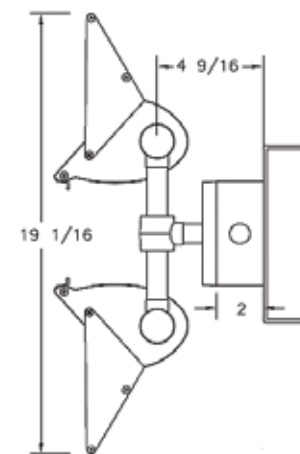
As part of the mural's 2009 restoration, new backlighting was installed. Taking advantage of an exterior grid behind the panels, two horizontal rows of back-to-back **Style F164s** (on custom mounting brackets) were used to light both up and down the mural. Three 16 ft. segments in each row, each with 2 two-headed, 8 ft. fixtures, span the width of the mural. The overall effect is a uniform distribution of light on the back of the mural creating a dramatic focal point for the Temple lobby.



Both horizontal fixture runs utilize back-to-back reflectors, cross-firing light up and down the backside of the mural. The selected mounting locations help minimize potential shadowing from the art's structural support framing. Cutoff visors provide additional shielding for visitors who pass beneath the art.



The reflector in the **Style 164** is optimized for the T5 lamp, generating unequalled uniformity from minimal setbacks. The **Style 164** also features an integral electronic ballast and an internal wireway for thru wiring.



Standard cast hubs were modified to provide threaded three-way "T" connections for mounting to the mural's exterior grid. Mating stems and special surface mounted splice boxes were both finished to match. The splice boxes receive surface conduit feeds, taking the place of contractor provided J-boxes.