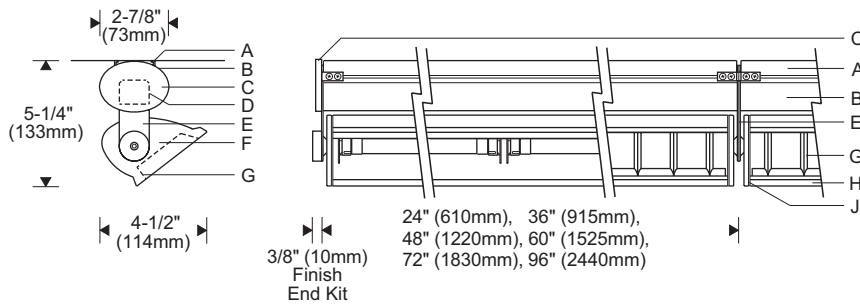
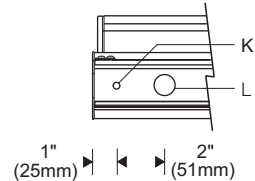


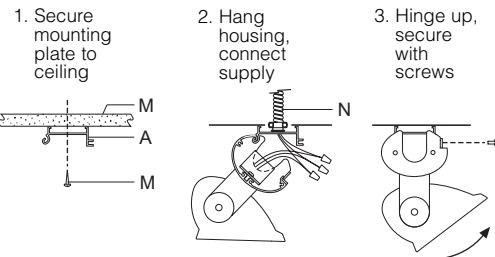
Ceiling Mount: 1:8 Scale



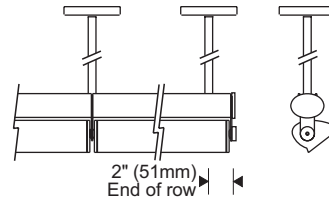
Mounting Plate (S mount)



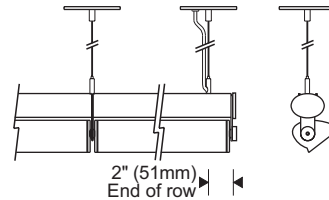
Installation (S mount)



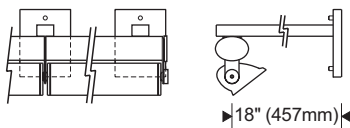
Hangers (X mount) Pendant Stems



Cables



Cantilevers



Specifications

- | | | | |
|---|---|---|--|
| A Extruded aluminum mounting plate | D Electronic ballast | H Specular extruded aluminum reflector | L Knockout, (2) 7/8" (22mm) dia. |
| B Extruded aluminum ballast housing | E Aluminum sidearm | J Aluminum reveal plate (black) | M Support structure and fasteners (by others) |
| C AFE finish end kit (aluminum end plates and knobs) | F Die cast aluminum end plate | K Mounting hole, (3) 9/32" (7mm) dia. | N Conduit and connector (by others) |
| | G Snap-in specular parabolic baffle (optional) | | |

Finish:

Style 105 fluted – bright clear anodized aluminum housing. Painted end plates, sidearms and ballast housing in choice of silver or semi-gloss black.

Style 106 smooth – semi-gloss white housing and end plates. Painted surfaces – 6 stage pretreatment and electrostatically applied thermoset powder coat for stable, long lasting and corrosion resistant finish.

Reflector – extruded high purity aluminum with clear anodized specular finish. All luminaire hardware – stainless steel.

Mounting:

S mount – mounting plate fastens flush to ceiling. Unit hinges on plate for hands-free access to wiring.

X mount – stems, cables or cantilevers **ordered separately**

Pendant stem – 11/16" O.D. aluminum, internally threaded.

Cable – 1/16" dia. 7x7 aircraft cable, field adjustable length.

Cantilever – 1" x 2" steel arm. Interface plate (under canopy) allows ±5° leveling, **suitable support structure required.**

Electrical:

Use 90°C wire for supply connections and through wire.

S mount – 7/8" (22mm) dia. knockouts at ends of mounting plate for conduit feed (by others). Accessory end feed kit provides entry for surface conduit at end of ballast housing.

X mount – electrical feed hanger mounts over recessed outlet box (by others) and **must be located at end of row.**

Housing hinges down for access to ballast and wiring. Optional #12 AWG prewired modular through wiring with quick connectors.

Integral electronic HPF thermally protected class P ballast with end-of-life protection.

Optional electronic dimming ballast; compatible dimmer switch required (by others). Consult sales representative for compatibility and specifications.

Optional integral emergency battery operates one lamp. Separate unswitched supply is required.

Standard:

UL listed or CSA certified for damp locations (Style 124 painted model with lens recommended for damp locations).

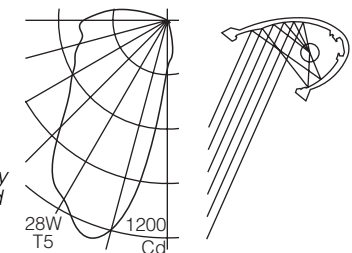
Features

- Unequalled T5/T5HO wall wash – ideal for office and retail perimeters, displays, art walls, marker boards, corridors
- Adjustable – accommodates setback and height of wall
- Versatile – surface, cantilever, stem or cable mounting
- Integral electronic ballast – dimming, emergency optional
- Optional parabolic cross baffle for lengthwise shielding

Performance

Two parabolic reflector sections drive light to the bottom of the wall.

An elliptical section shields the lamp from normal viewing angles and redirects its light to a parabola. Glare is minimized and asymmetry of the beam is maximized resulting in high beam efficiency and superior surface uniformity.



For complete photometrics, visit thelightingquotient.com



To order by Row Code - T5 Lamps

When the Style 105/106 small integral T5 fluorescent is run continuously in a **straight** row, **elliptipar** offers the option of specifying and ordering the entire row as one catalog number. Ordering by row eliminates the need to calculate length, type and quantity of reflectors and end plates.

Steps to specify Row Code:

1. Determine lamp type and select corresponding lamp code (**S**=T5, **V**=T5HO).
2. Determine maximum available length for row and round up to nearest foot. Find nominal row length in chart (col. 1).
3. Determine what lengths/wattages of lamps will be used and select the corresponding lamp combination codes (col. 2).
Example: If only 3' and 4' lamps are to be used on the project, specify row codes ending with **A, B** and/or **D** only.
4. If for a given nominal row length a preferred lamp combination is not listed, select the next shorter row that is available in the desired lamp combination.
5. Once the nominal row length and lamp combination has been found in the chart, note the actual overall row length (last column). Also consider if the quantity and lengths of the individual luminaires suit the installation.
6. Enter the four character Row Code in place of the Lamp Code described on page W-7.1. The remainder of the catalog number is formed as shown on page W-7.1.

Note: Stem, cable or cantilever hangers for use with X mount luminaires MUST be ordered separately.

3 Row Code

Note: Enter row code in place of Lamp Code on page W-7.1.



Lamp Combination(s)*

- A** = All nominal 3' lamps
- B** = All nominal 4' lamps
- D** = Nominal 3' and 4' lamps
- F** = Nominal 3' and 5' lamps
- G** = Nominal 4' and 5' lamps

Nominal Row Length in feet, between 3' and 50' **

- S** = T5 fluorescent
- V** = T5 HO fluorescent

* Not all lamp combinations are available for each nominal row length (see chart)

** Row lengths over 50' can be formed by combining shorter row lengths. Example: a 60' row can be ordered as two 30' rows.

Example

F106 - S36B - S - 02 - 2 - 000

Nominal 36' long row of Style 106 small smooth T5 fluorescent using only nominal 4' (28W) lamps. Row includes four nominal 8' reflectors with two 4' lamps, one nominal 4' reflector with one 4' lamp, one **AFE** finish end kit and integral 277V electronic ballasts. Overall row length is 36' 0-3/4".

Nominal Row Length (feet)	Lamp Combination	Nominal 3' Luminaire (1 x nominal 3' lamp)	Nominal 4' Luminaire (1 x nominal 4' lamp)	Nominal 5' Luminaire (1 x nominal 5' lamp)	Nominal 6' Luminaire (2 x nominal 3' lamps)	Nominal 8' Luminaire (2 x nominal 4' lamps)	AFE Finish End Kit	Overall Row Length
03	A	1					1	3' 0-3/4"
04	B		1				1	4' 0-3/4"
05	G			1			1	5' 0-3/4"
06	A				1		1	6' 0-3/4"
07	D	1	1				1	7' 0-3/4"
08	B					1	1	8' 0-3/4"
09	A	1			1		1	9' 0-3/4"
09	G		1	1			1	9' 0-3/4"
10	D		1		1		1	10' 0-3/4"
11	D	1				1	1	11' 0-3/4"
11	F			1	1		1	11' 0-3/4"
12	A				2		1	12' 0-3/4"
12	B		1			1	1	12' 0-3/4"
13	D	1	1		1		1	13' 0-3/4"
13	G			1		1	1	13' 0-3/4"
14	D				1	1	1	14' 0-3/4"
15	A	1			2		1	15' 0-3/4"
15	D	1	1			1	1	15' 0-3/4"
16	B					2	1	16' 0-3/4"
17	D	1			1	1	1	17' 0-3/4"
17	F			1	2		1	17' 0-3/4"
17	G		1	1		1	1	17' 0-3/4"
18	A				3		1	18' 0-3/4"
18	D		1		1	1	1	18' 0-3/4"
19	D	1				2	1	19' 0-3/4"
20	B		1			2	1	20' 0-3/4"
21	A	1			3		1	21' 0-3/4"
21	G			1		2	1	21' 0-3/4"
22	D		1		3		1	22' 0-3/4"
23	D	1	1			2	1	23' 0-3/4"
23	F			1	3		1	23' 0-3/4"
24	A				4		1	24' 0-3/4"
24	B					3	1	24' 0-3/4"
25	D	1			1	2	1	25' 0-3/4"
25	G		1	1		2	1	25' 0-3/4"
26	D		1		1	2	1	26' 0-3/4"
27	D	1				3	1	27' 0-3/4"
28	B		1			3	1	28' 0-3/4"
29	D	1	1		1	2	1	29' 0-3/4"
29	G			1		3	1	29' 0-3/4"

Nominal Row Length (feet)	Lamp Combination	Nominal 3' Luminaire (1 x nominal 3' lamp)	Nominal 4' Luminaire (1 x nominal 4' lamp)	Nominal 5' Luminaire (1 x nominal 5' lamp)	Nominal 6' Luminaire (2 x nominal 3' lamps)	Nominal 8' Luminaire (2 x nominal 4' lamps)	AFE Finish End Kit	Overall Row Length
30	A				5		1	30' 0-3/4"
30	D				1	3	1	30' 0-3/4"
31	D	1	1			3	1	31' 0-3/4"
32	B					4	1	32' 0-3/4"
33	A	1			5		1	33' 0-3/4"
33	G		1	1		3	1	33' 0-3/4"
34	D		1		1	3	1	34' 0-3/4"
35	D	1				4	1	35' 0-3/4"
36	A				6		1	36' 0-3/4"
36	B		1			4	1	36' 0-3/4"
37	D	1	1		1	3	1	37' 0-3/4"
37	G			1		4	1	37' 0-3/4"
38	D				1	4	1	38' 0-3/4"
39	D	1	1			4	1	39' 0-3/4"
40	B					5	1	40' 0-3/4"
41	D	1			1	4	1	41' 0-3/4"
41	G		1	1		4	1	41' 0-3/4"
42	A				7		1	42' 0-3/4"
42	D		1		1	4	1	42' 0-3/4"
43	D	1				5	1	43' 0-3/4"
44	B		1			5	1	44' 0-3/4"
45	A	1			7		1	45' 0-3/4"
45	D	1	1		1	4	1	45' 0-3/4"
45	G			1		5	1	45' 0-3/4"
46	D				1	5	1	46' 0-3/4"
47	D	1	1			5	1	47' 0-3/4"
48	A				8		1	48' 0-3/4"
48	B					6	1	48' 0-3/4"
49	D	1			1	5	1	49' 0-3/4"
49	G		1	1		5	1	49' 0-3/4"
50	D				3	4	1	50' 0-3/4"



Features

- Time saving – simplifies specification and ordering
- One catalog number – includes all necessary reflectors to install row plus **AFE** finish end kit (**X** mount stem, cable or cantilever hangers are ordered separately)
- Assured fit – all you need is the maximum available length of the ceiling



elliptipar 
There is no equal™

elliptipar from **The Lighting Quotient**
114 Boston Post Road, West Haven, Connecticut 06516, USA
Voice 203.931.4455 • Fax 203.931.4464 • thelightingquotient.com

Certain products illustrated may be covered by applicable patents and patents pending. These specifications supersede all prior publications and are subject to change without notice. Copyright © 2010 Sylvan R. Shemitz Designs, Inc., all rights reserved.