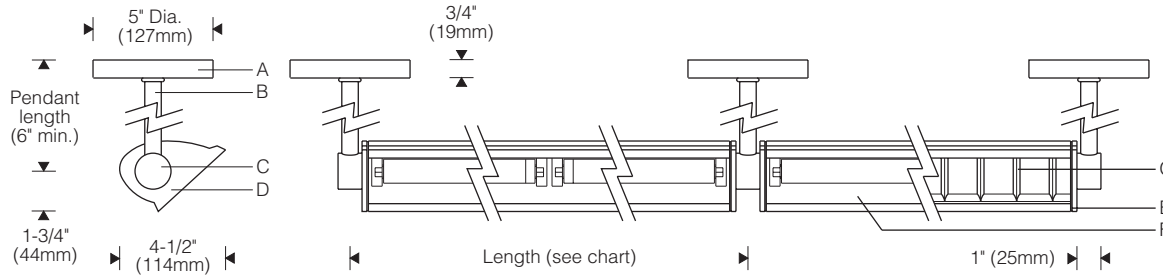
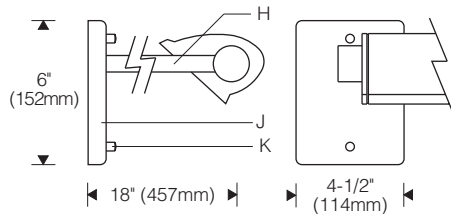


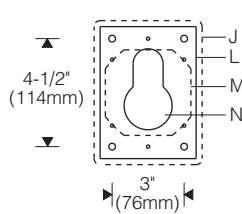
Pendant Mount 1:8 Scale



Cantilever Mount 1:8 scale



Mounting Plate



Nominal Lamp Length	Length (center to center of hangers)	
	T8	T5
1 x 2'	26-7/16" (672mm)	24-7/16" (621mm)
1 x 3'	38-7/16" (976mm)	36-1/4" (921mm)
1 x 4'	50-7/16" (1281mm)	48" (1219mm)
1 x 5'	62-5/16" (1583mm)	60" (1524mm)
2 x 3'	74-15/16" (1903mm)	72" (1829mm)
2 x 4'	98-15/16" (2513mm)	96" (2438mm)
2 x 5'	122-15/16" (3123mm)	120" (3048mm)



Specifications

- A** Round aluminum canopy (pendant mount)
- B** 11/16" O.D. aluminum pendant stem
- C** Machined aluminum mounting hub
- D** Die-cast aluminum end plates
- E** Aluminum reveal plates (black)
- F** Specular extruded aluminum reflector
- G** Optional snap-in specular parabolic cross baffle
- H** 11/16" O.D. cantilever arm
- J** Rectangular aluminum canopy (cantilever mount)
- K** Chrome cap nuts
- L** Cantilever mounting plate
- M** Outlet box (by others)
- N** Splice access opening

Finish:

Style 101 fluted - bright clear anodized aluminum housing. Painted end plates in choice of silver or semi-gloss black.
 Style 102 smooth - semi-gloss white housing and end plates.
 Painted surfaces - 6 stage pretreatment and electrostatically applied thermoset powder coat for stable, long lasting and corrosion resistant finish.
 Reflector - extruded high purity aluminum with clear anodized specular finish. All luminaire hardware - stainless steel.
 All mounting hardware - zinc or cadmium plated.

Mounting:

Pendant or cantilever mounting hangers (ordered separately); specify end and intermediate hangers.
 Pendant assembly furnished with canopy for mounting on recessed outlet box. Optional hang-straight allows mounting on slopes up to 45° (in the plane perpendicular to wall).
 Cantilever wall plate mounts over recessed outlet box (suitable backing structure required). Adjustable interface plate (concealed under canopy) allows for leveling of arms.
Cantilever limited to single lamp reflectors (up to 5' long).

Electrical:

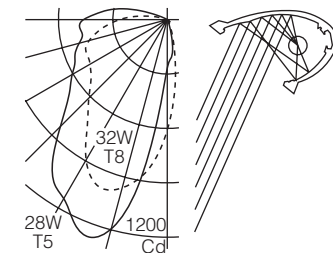
Use 90°C wire for supply connections.
 Remote electronic HPF thermally protected class P ballast (with end-of-life protection for T5 lamps). Aluminum ballast enclosure includes four 7/8" diameter entries and a knockout for an accessory fuse.
Maximum wire length between electronic ballast and fixture is 7' for two-lamp reflectors and 12' for one-lamp reflectors, less length of stem or arm.
 For dimming, see Styles 105/106 with integral dimming ballast.
 For complete ballast specifications, see Accessories Section.
Standard:
 UL listed or CSA certified for damp locations. (Style 124 painted model with lens recommended for damp locations.)

Features

- Unequaled low energy wall lighting with T5 or T8 lamps
- Machined aluminum mounting hub attaches to pendant stem or cantilever arm without exposed threads
- Die-cast end plate joins at articulated black reveal - no exposed fasteners
- Optional snap-in specular parabolic cross baffle

Performance

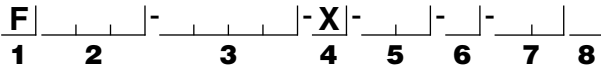
Two parabolic reflector sections drive light to the bottom of the wall. An elliptical section shields the lamp from normal viewing angles and redirects its light to a parabola. Glare is minimized and asymmetry of the beam is maximized resulting in high beam efficiency and superior surface uniformity.



For complete photometrics, see www.elliptipar.com.



To form a Catalog Number



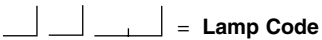
1 Source

F = Linear fluorescent

2 Style

101 = Small fluted surface, remote ballast
 102 = Small smooth surface, remote ballast

3 Lamp

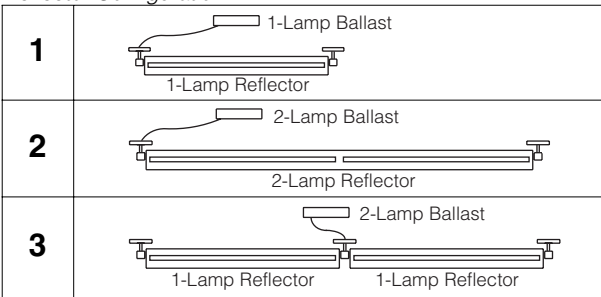


Lamp Wattage (see chart below)
 Reflector Configuration, specify 1, 2 or 3
 (see chart below)

A = T8 Fluorescent
 T = T5 Fluorescent

Example: **A325** = two nominal 3' reflectors, each for use with one 25W T8 lamp; one 2-lamp ballast

Reflector Configuration



Lamp Wattage

Lamp Length (nominal)	Lamp Wattage (Lamp Number)		
	T8	T5	T5 HO
2'	17 (F17T8)	14 (F14T5)	24 (F24T5/HO)
3'	25 (F25T8)	21 (F21T5)	39 (F39T5/HO)
4'	32 (F32T8)	28 (F28T5)	55 (F54T5/HO)
5'	40 (F40T8)	35 (F35T5)	80 (F80T5/HO)

For complete lamp and ballast information, see Accessories Section. Standard T5 lamp color is 3000K / 80+ CRI. T8 lamps by others.

Project: _____

4 Mounting

X = For use with end and intermediate hangers. Available in pendant or cantilever (order separately).

Note: Cantilevers are limited to use with single lamp reflectors (Configuration 1 or 3) up to 5' long.

5 Finish

Style 101 Fluted

01 = Bright aluminum housing with silver end plates

81 = Bright aluminum housing with semi-gloss black end plates

Style 102 Smooth

02 = Semi-gloss white reflector and end plates

99 = Custom RAL or computer matched color to be specified, consult sales representative

6 Voltage/Ballast

Electronic

1 = 120V
 2 = 277V
 3 = 347V (Canada)

Dimming*

* For dimming, see Styles 105/106 with integral dimming ballast.

7 Option (See Accessories Section for specifications)

00 = No options
 0B = Snap-in parabolic cross baffle, specular finish, provides 35° lengthwise shielding
 0E = Remote emergency battery pack
 XX = For modification not listed, include detailed description. Consult factory prior to specification.

8 Standard

0 = UL, Underwriters Laboratories
 J = CSA, Canadian Standards Association

Example

F102 - A132 - X - 02 - 1 - 000

Small smooth surface model for use with one 32W T8 lamp in nominal 4 foot reflector. Semi-gloss white. Remote 1-lamp 120V electronic ballast. UL. (Order pendant or cantilever mounting hangers separately.)

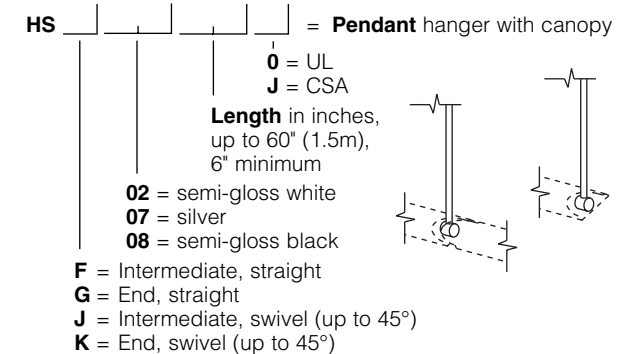
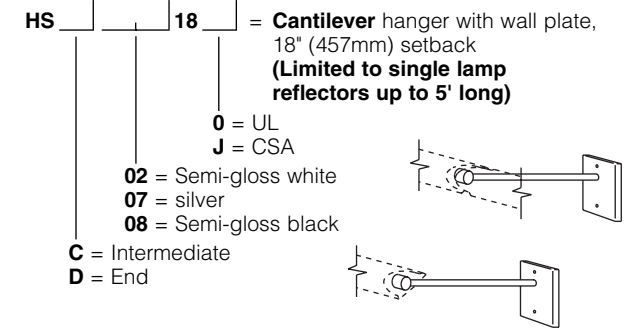
Type: _____

Mounting Hangers

For individually mounted luminaires, order two end hangers for each reflector.

For a continuous row, order two end hangers. To determine the quantity of intermediate hangers, total the number of reflectors in the row and subtract one. Example: a row of five reflectors requires 2 end hangers and 4 intermediate hangers.

Note: In determining hanger quantities, treat Reflector Configuration 3 as two reflectors.



Accessories

Order separately. See Accessories Section for specifications.

AFK000X | | = Ballast fuse kit

0 = UL
 J = CSA



The external shapes of the asymmetric reflectors are trademarks of **elliptipar**. Certain products illustrated may be covered by applicable patents and patents pending. For a list of patents, see Contents pages. These specifications supersede all prior publications and are subject to change without notice. © 2007 **elliptipar**.

