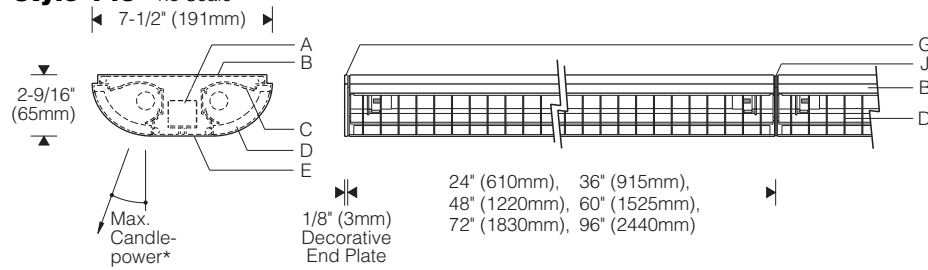
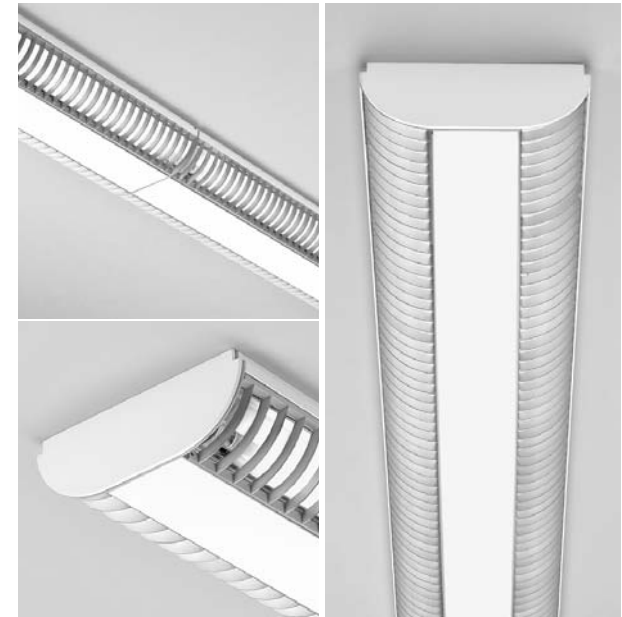
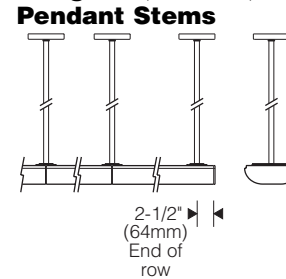


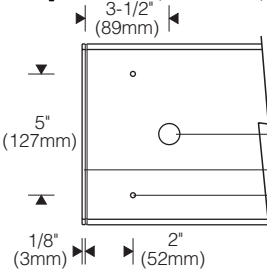
Style 145 1:8 Scale



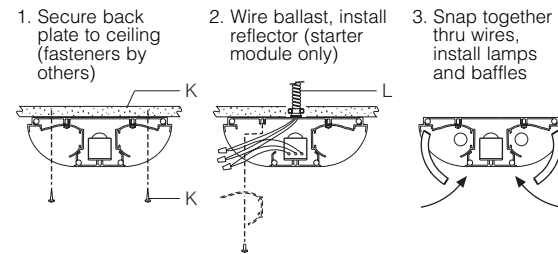
Hangers (X / Y mount)



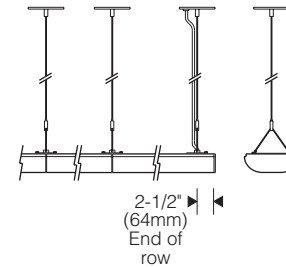
Top View (S / T mount)



Installation (S / T mount)



Cables



* Aiming is field adjustable from 25° to 35° above nadir (factory setting is 25°).

Specifications

- | | | | |
|---|--|--|---|
| A Electronic ballast | D High-impact poly-carbonate baffle, 25° shielding (matte gray) | G Aluminum decorative end plates (order separately) | J Aluminum joiner/reveal plates (matte gray) |
| B Extruded aluminum back plate | E Extruded aluminum housing | H Mounting holes, 9/32" (7mm) dia. | K Structure and fasteners (by others) |
| C Specular extruded aluminum reflector (adjustable aiming) | F Conduit entry, 7/8" (22mm) dia. (S mount) | | L Conduit and connector (by others) |

Finish:

Matte white housing and decorative end plates. Joiner/reveal plates and baffle finished matte gray.
 Painted surfaces – 6 stage pretreatment and electrostatically applied thermoset powder coat for stable, long lasting and corrosion resistant finish.
 Reflector – extruded high purity aluminum with clear anodized specular finish. All luminaire hardware – stainless steel.

Mounting:

S / T mount – back plate mounts flush to ceiling.
X / Y mount – stem or cable hangers **ordered separately**.
 Pendant stem – 11/16" O.D. aluminum, internally threaded.
 Cable – 1/16" dia. 7x7 aircraft cable, field adjustable length.
 Hangers at ends of row (or single) are located 2-1/2" (64mm) from end. Intermediate hangers are centered on joint.
 For single unit, specify starter/individual module (**S** or **X** mount). For continuous row, add intermediate/end modules (**T** or **Y** mount). Joiner/reveal plates align and bolt together. Starter module can be located anywhere along the row.

Electrical:

Units are prewired with #12 AWG modular through wiring with quick connectors. On starter/individual module, one reflector is removed for access to supply connection.
S mount – 7/8" dia. knockouts located at ends of back plate for conduit feed (by others). Use 90°C wire for supply connection.
X mount – electrical feed hanger mounts over recessed outlet box (by others). Stem electrical feed supplied with #14 AWG leads. Cable feed includes 18/4 cord.
 Integral electronic HPF thermally protected class P ballast with end-of-life protection. Reflectors can be removed to service ballasts.
 Optional electronic dimming ballast; compatible dimmer switch required (by others). Consult sales representative for compatibility and specifications.
 Optional integral emergency battery available on starter/individual module operates one lamp. Separate unswitched supply is required.

Standard: UL listed or CSA certified.

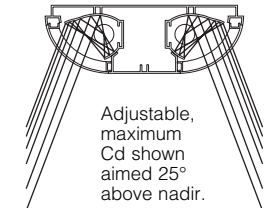
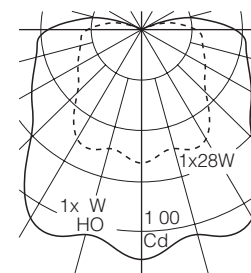
Features

- T5/T5HO for precise optical control – adjustable aiming
- Back-to-back reflectors – even wash of light down both sides of corridors, retail aiseways, stacks, server farms
- Radial baffle finished matte gray – low enough in brightness when lighted to nearly match housing
- Continuous rows – prewired quick connect thru wiring

Performance

Two parabolic reflector sections drive light to the bottom of the vertical surface. An elliptical section redirects light that is normally wasted back to a parabola. Glare is minimized and asymmetry of the beam is maximized resulting in high beam efficiency and superior surface uniformity.

For complete photometrics, visit thelightingquotient.com



elliptipar 
 There is no equal™

