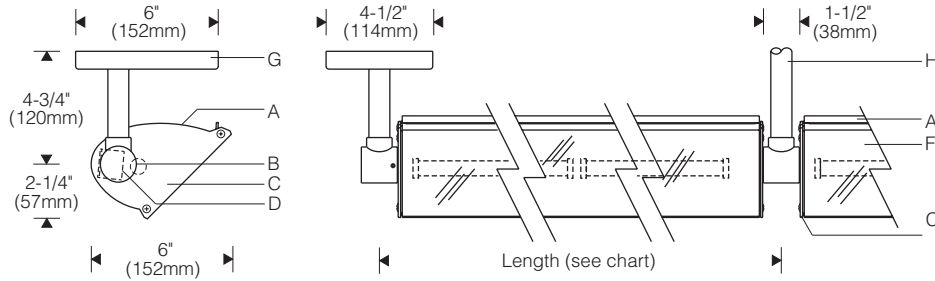
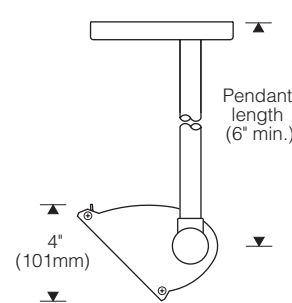


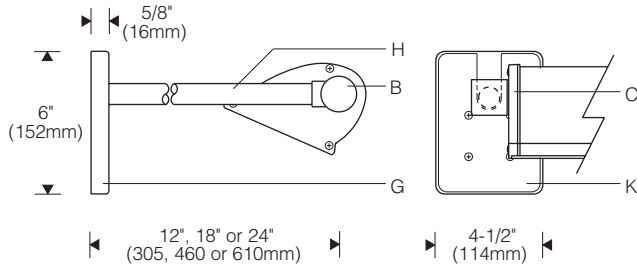
Surface Hanger 1:8 Scale



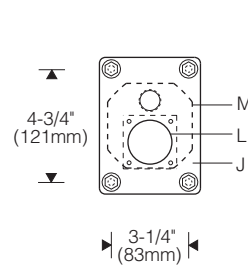
Pendant Hanger



Cantilever Hanger (Lighting upward)



Mounting Plate



Lamp Length	Length (center to center of hubs)
1 x 2'	25-1/4" (640 mm)
1 x 3'	37" (940mm)
1 x 4'	48-3/4" (1240mm)
1 x 5'	60-5/8" (1540mm)
2 x 3'	72" (1830mm)
2 x 4'	96" (2440mm)



Specifications

- A** Specular extruded aluminum reflector
- B** Aluminum hub with locking set screws
- C** Die-cast aluminum end plates
- D** Integral electronic ballast / internal wireway
- F** UV and impact resistant acrylic snap-on lens with silicone gasket
- G** Surface, cantilever, or pendant hangers (ordered separately)
- H** Tubular steel stem or arm
- J** Die-cast aluminum mounting plate (1/4-20 fasteners by others)
- K** Aluminum cover plate (conceals fasteners and outlet box)
- L** Outlet box access opening (electrical feed)
- M** Recessed outlet box (by others)

Finish:

Semi-gloss white housing and end plates.
 Painted surfaces – 6 stage pretreatment and electrostatically applied thermoset polyester powder coating for stable, long lasting and corrosion resistant finish.
 Reflector – extruded high purity aluminum with clear anodized specular finish. All luminaire hardware – stainless steel.
 Snap-on lens – composite of impact resistant and UV stabilized acrylic for easy maintenance.

Mounting:

Surface, pendant or cantilever hangers **ordered separately**; specify end kit or intermediate hangers.
 Hangers include aluminum mounting plate, cover plate and 1-1/2" dia. x 1-1/2" aluminum hub with 7/8" O.D. steel arm/ stem. 1/4-20 mounting fasteners by others. Suitable backing structure required – allow 3 lbs/ft (21.6kg/m) (8' unit = 24 lbs).
 Reflector aiming is adjustable – locks with set screws.

Electrical:

Use 90C° wire for supply connections and through wire.
 Electrical feed hanger mounts over recessed outlet box (by others). Locate electrical feed at end of row. Internal wireway allows supply wiring to be fed through mounting hub to adjacent units.
 Integral electronic HPF thermally protected class P ballast with end-of-life protection.
 Optional electronic dimming ballast; compatible dimmer switch required (by others). Consult sales representative for compatibility and specifications.
 Optional integral emergency battery operates one lamp. Separate unswitched supply is required.
 For complete ballast specifications, see Accessories Section.

Standard:

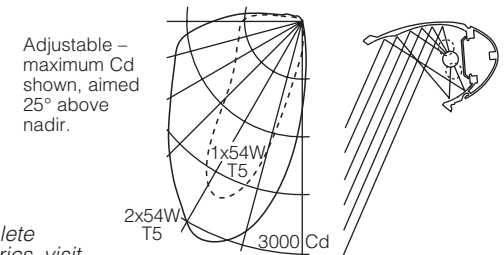
UL listed or CSA certified for damp locations.

Features

- Reflector optimized for T5 – precise optical control for wall lighting from minimal setbacks; optional dual lamp
- Snap-on clear acrylic lens for safety, easy maintenance – ideal for food service and healthcare settings
- Versatile – surface, cantilever or pendant mount
- Internal wireway – integral electronic ballast; through wiring

Performance

Two parabolic reflector sections drive light to the bottom of the wall. An elliptical section shields the lamp from normal viewing angles and redirects its light to a parabola. Glare is minimized and asymmetry of the beam is maximized resulting in high beam efficiency and superior surface uniformity.



For complete photometrics, visit thelightingquotient.com

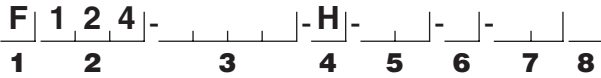
Cradle to Cradle Certified™ is a certification mark licensed by the Cradle to Cradle Products Innovation Institute.



elliptipar
there is no equal™



To form a Catalog Number



1 Source

F = Linear fluorescent

2 Style

124 = Medium smooth surface, integral ballast

3 Lamp



Lamp Wattage (see chart below)

Lamp Configuration

- T1 = Single-lamp cross section, 1-lamp in length
- T2 = Single-lamp cross section, 2-lamp in length
- D2 = Dual-lamp cross section, 1-lamp in length
- D4 = Dual-lamp cross section, 2-lamp in length

Example: T255 = Nominal 8' (2.4m) housing with (2) 54W T5HO lamps (in length)

Length (nominal)	T5		T5HO	
	Code	Lamp(s)	Code	Lamp(s)
T5 Fluorescent				
2' (0.6m)	T114	1 x F14T5	T124	1 x F24T5/HO
	D214	2 x F14T5	D224	2 x F24T5/HO
3' (0.9m)	T121	1 x F21T5	T139	1 x F39T5/HO
	D221	2 x F21T5	D239	2 x F39T5/HO
4' (1.2m)	T128	1 x F28T5	T155	1 x F54T5/HO
	D228	2 x F28T5	D255	2 x F54T5/HO
5' (1.5m)	T135	1 x F35T5	T180	1 x F80T5/HO
	D235	2 x F35T5	D280	2 x F80T5/HO
6' (1.8m)	T221	2 x F21T5	T239	2 x F39T5/HO
	D421	4 x F21T5	D439	4 x F39T5/HO
8' (2.4m)	T228	2 x F28T5	T255	2 x F54T5/HO
	D428	4 x F28T5	D455	4 x F54T5/HO

For complete lamp and ballast information, see Accessories Section. Standard T5 lamp color is 3000K/80+ CRI.

Project: _____

4 Mounting

H = For use with accessory surface, pendant or cantilever hub mounting hangers.

Note: Order hangers separately. Specify end kit or intermediate hanger.

5 Finish

- 02 = Semi-gloss white
- 99 = Custom RAL or computer matched color to be specified, consult sales representative

6 Voltage/Ballast

- | | |
|--------------------|-----------------|
| <i>Electronic</i> | <i>Dimming+</i> |
| 1 = 120V | T = 120V |
| 2 = 277V | V = 277V |
| 3 = 347V (Canada)* | |

* Consult sales representative for availability of 347V.
 + Consult sales representative for dimming 5' lamps (lamp codes T135, D235, T180, D280). Availability for wattages and voltages varies with ballast manufacturer and control type – see thelightingquotient.com for additional dimming specifications and limitations.

7 Option

- 00 = No options
- 0E = Integral emergency battery pack with indicator lamp and test button. Not available in 2' and 3' units. Operates one lamp. Note: Requires unswitched feed to battery (by others).
- 0P = Natatorium (pool) use
- XX = For modification not listed, include detailed description. Consult factory prior to specification.

8 Destination Requirement

- 0 = UL listed or CSA certified for U.S.
- J = UL listed or CSA certified for Canada

Example

F124 - T255 - H - 02 - 1 - 000

Medium smooth surface fluorescent for use with two 54W T5HO lamps in nominal 8 foot reflector. For use with accessory hub hangers. Semi-gloss white powder coat finish. Integral 2-lamp 120V electronic ballast. UL listed or CSA certified for U.S.

Order end kit and intermediate mounting hangers separately.

Type: _____

Hangers

Order separately. See Accessories Section for specifications. Hangers include mounting plate, cover, 7/8" (22mm) O.D. tubular stem/arm and hub. End kit includes one electrical feed end hub and one non-electrical end hub. Intermediate hanger includes single non-electrical joiner hub.

Note: Electrical feed must be located at an end of row.

For individually mounted luminaire, order one end kit. For a continuous row, order one end kit and one intermediate hanger for each additional luminaire in the row. Example: two rows of four reflectors requires 2 end kits and 6 intermediate hangers.

HCA Surface hanger (intermediate)

HCB Surface hanger (end kit/pair)

HCC Cantilever hanger (intermediate)

HCD Cantilever hanger (end kit/pair)

HCF Pendant hanger (intermediate)

HCG Pendant hanger (end kit/pair)

AMS _____ | 00 _____ = Surface mounting and splice box

0 = U.S.

J = Canada

Finish: 02 white, 06 dark bronze, 07 silver, 08 semi-gloss black, 12 green

Accessories

Order separately. See Accessories Section for specifications.

AFK000X _____ = Ballast fuse kit

0 = U.S.

J = Canada

