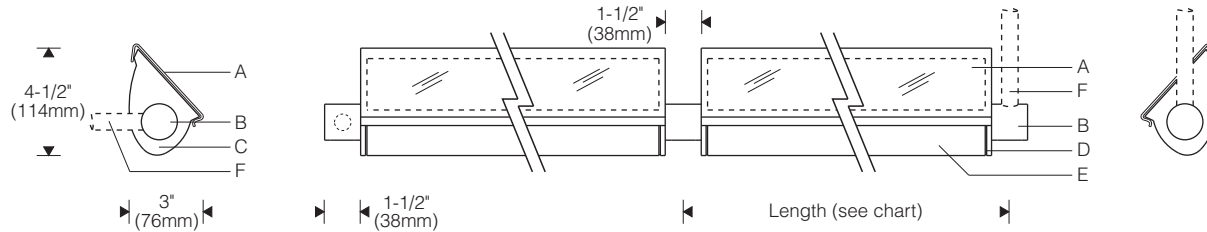
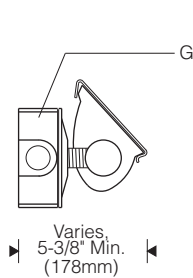


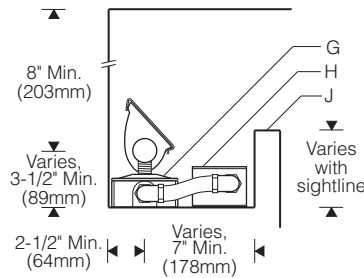
Cantilever / Pendant 1:8 Scale



Surface 1:8 Scale



Cove 1:12 Scale



Lamps	Length (center to center of hangers)	
	T8	T5
1 x 2'	27-1/8" (689mm)	25-1/16" (636mm)
1 x 3'	39-1/8" (994mm)	36-7/8" (936mm)
1 x 4'	51-1/8" (1299mm)	48-5/8" (1235mm)
1 x 5'	62-15/16" (1598mm)	60-5/8" (1539mm)
2 x 3'	75-5/8" (1921mm)	72-5/8" (1884mm)
2 x 4'	99-5/8" (2530mm)	96-5/8" (2454mm)
2 x 5'	123-5/8" (3140mm)	120-5/8" (3063mm)



Specifications

- A** UV and impact resistant acrylic snap-on lens with EPDM gasket
- B** Machined aluminum mounting hubs with o-ring gaskets (black) (ordered separately)
- C** Die-cast aluminum end plates
- D** Aluminum reveal plates (black)
- E** Specular extruded aluminum reflector
- F** 1/2" rigid conduit cantilever or pendant supports (by others)
- G** Outlet boxes, liquid tight flexible conduit and fittings (by others)
- H** Remote ballast in weatherproof aluminum enclosure
- J** Architectural cove (for design guidance, see Applications Section)

Finish:

Exterior surfaces - 6 stage pretreatment and electrostatically applied thermoset polyester powder coating for a durable abrasion, fade and corrosion resistant finish. Choice of semi-gloss colors (see ordering information). Mounting hubs finished black.

Reflector - extruded high purity aluminum with clear anodized specular finish. All hardware and components - non corrosive stainless steel or aluminum.

Snap-on lens - composite of impact resistant and UV stabilized acrylic. EPDM gasket for watertight operation when facing upward.

Mounting:

Machined aluminum mounting hubs (ordered separately) with internal 1/2" NPT threaded entry. 1/2" rigid conduit supports or fittings (by others). Allow 2.5 lbs/foot of reflector (example: 8' unit x 2.5 = 20 pounds).

Specify intermediate and end hubs. Reflector is adjustable about the hubs. Aiming is locked in position with set screws in the hubs.

Electrical:

Use 90°C wire for supply connections.

Remote electronic HPF thermally protected class P ballast rated for 0°F/-18°C starting. Weatherproof aluminum enclosure includes three 7/8" diameter entries and one 3/8" liquidtight conduit connector.

7' (2.1m) wire leads exit end of reflector. **Maximum wire length between remote ballast and fixture is 7' for two-lamp reflectors and 12' for one-lamp reflectors.**

For complete ballast specifications, see Accessories Section.

Standard:

UL listed or CSA certified for wet locations when mounted horizontally. For positions other than horizontal, consult factory.

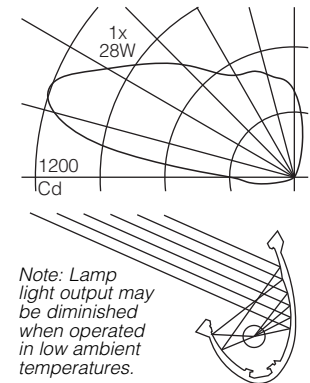
Features

- T5 for precise optical control - unequaled uniformity for uplighting soffits, vaults, canopies from minimal setbacks
- Snap-on impact and UV resistant acrylic lens with EPDM gasket - watertight for uplighting orientations
- Durable aluminum construction - extruded reflector, die-cast end plates, machined hubs; powder coat finish



Performance

Two parabolic reflector sections drive light across the overhead plane from one edge. An elliptical section redirects its light to a parabola and shields the lamp. Asymmetry is maximized resulting in high beam efficiency and superior surface uniformity. The fast "runback" minimizes wasted spill light.



For complete photometrics, visit www.elliptipar.com

To form a Catalog Number

F 1 5 1 - - - - - H - - - - -
 1 2 3 4 5 6 7 8

1 Source

F = Linear fluorescent

2 Style

151 = Small outdoor, remote ballast

3 Lamp

□ □ □ □ = Lamp Code

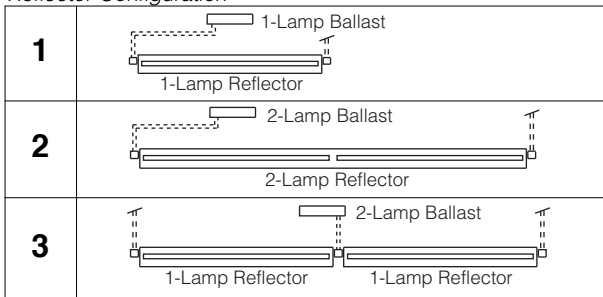
Lamp Wattage (see chart below)

Reflector Configuration, specify 1, 2 or 3 (see chart below)

A = T8 Fluorescent
 T = T5 Fluorescent

Example: **T328** = two nominal 4' reflectors, each for use with one 28W T5 lamp; one 2-lamp ballast

Reflector Configuration



Lamp Wattage

Lamp Length (nominal)	Lamp Wattage (Lamp Number)		
	T8	T5	T5HO *
2'	17 (F17T8)	14 (F14T5)	24 (F24T5/HO)
3'	25 (F25T8)	21 (F21T5)	39 (F39T5/HO)
4'	32 (F32T8)	28 (F28T5)	55 (F54T5/HO)
5'	40 (F40T8)	35 (F35T5)	80 (F80T5/HO)

For complete lamp and ballast information, see Accessories Section. Standard T5 lamp color is 3000K / 80+ CRI. T8 lamps by others.

* NEW T5HO amalgam lamps are available that produce > 90% of full light output over a broader temperature range than standard lamps - see www.elliptipar.com or consult factory for specifications.

Project: _____

4 Mounting

H = For use with end and intermediate mounting hubs (order separately) with internal 1/2" NPT thread (1/2" rigid conduit supports or fittings by others).

Note: For positions other than horizontal, consult factory.

5 Finish

02 = Semi-gloss white 99 = Custom RAL or computer matched color to be specified, consult sales representative.
 06 = Dark bronze
 07 = Silver
 08 = Semi-gloss black
 12 = Green

Note: Mounting hubs finished black

6 Voltage/Ballast

Electronic
 1 = 120V
 2 = 277V
 3 = 347V

7 Option

00 = No options
 0D = Remote electronic ballast for dry indoor location
 XX = For modification not listed, include detailed description. Consult factory prior to specification.

8 Standard

0 = UL, Underwriters Laboratories
 J = CSA, Canadian Standards Association

Example

F151 - T128 - H - 08 - 1 - 000

Small outdoor fluorescent for use with one 28W T5 lamp in nominal 4 foot reflector. For use with mounting hubs (1/2" rigid conduit supports by others). Semi-gloss black powder coat finish. Remote 1-lamp 120V electronic ballast in weatherproof enclosure. UL.
 (Order end and intermediate mounting hubs separately.)

Type: _____

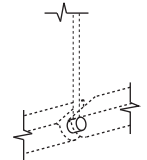
Mounting Hubs

For individually mounted luminaires, order two end hubs for each reflector.

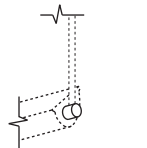
For a continuous row, order two end hubs. To determine the quantity of intermediate hubs, total the number of reflectors in the row and subtract one. Example: a row of five reflectors requires 2 end hubs and 4 intermediate hubs.

Note: In determining hub quantities, treat Reflector Configuration 3 as two reflectors.

HOA08000 = Intermediate mounting hub, semi-gloss black, internal 1/2" NPT thread (1/2" rigid conduit supports or fittings by others)



HOB08000 = End mounting hub, semi-gloss black, internal 1/2" NPT thread (1/2" rigid conduit supports or fittings by others)



Accessories

Order separately. See Accessories Section for specifications.

AFK000X □ = Ballast fuse kit

0 = UL
 J = CSA

