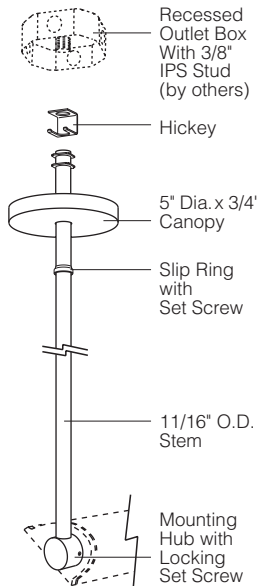
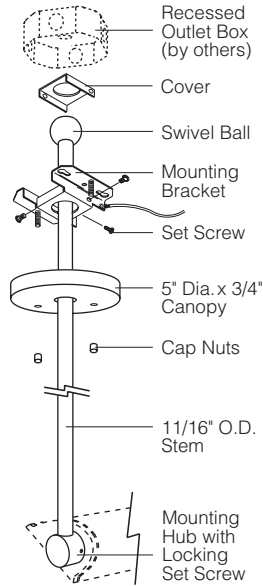


Wallwash Pendant linear fluorescent

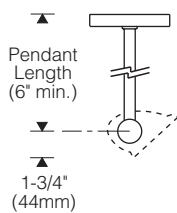
**Straight Pendant**



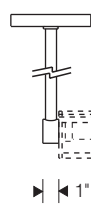
**Swivel Pendant**



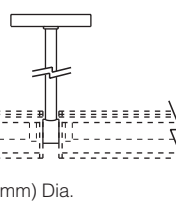
**Small (F102 shown)**



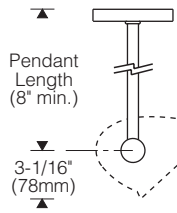
**End Hanger**



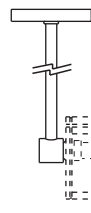
**Intermediate Hanger**



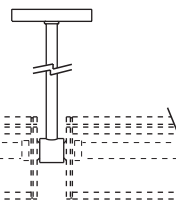
**Large (F104 shown)**



**End Hanger**



**Intermediate Hanger**



**Application:**

Suspends linear fluorescent luminaires (T5, T8 or continuous long twin tube compact fluorescent) below a horizontal ceiling plane in a wallwashing orientation. Optional one-way swivel hanger adapts to sloping ceilings up to 45°.

**Note: Stem connection at hub is rigid. (Reflectors must be horizontal. See diagram at right.)** Specify intermediate and end hangers as required. Refer to data pages for applicable luminaire styles.

**Construction:**

Machined aluminum mounting hub (1-1/2" diameter) threads onto schedule 40 aluminum tube stem (11/16" O.D.). Stem hangs from hickey or swivel ball hanger attached to recessed outlet box (by others). 5" dia. aluminum canopy.

Nipple at end of luminaire inserts into the hub and is locked with a cone point set screw. Wire leads are managed up stem to outlet box.

Remote ballast assemblies furnished with luminaires.

**Length:**

Specify in 1" increments up to 60" maximum (6" minimum for small, 8" for large). Pendant length is measured from center of mounting hub to underside of ceiling surface (at center of canopy for sloped ceiling applications).

**Finish:**

Electrostatically applied thermoset polyester powder coat. Zinc or cadmium plated mounting hardware (stainless steel for swivel hangers).

**Ordering Information:**

Order luminaire(s) separately, specify **X** mount. Refer to individual data pages for complete ordering information.

<b>H</b>	_____	= Pendant hanger, linear source
	_____	<b>0</b> = UL
	_____	<b>J</b> = CSA
	_____	<b>Length</b> in inches, up to 60" maximum (6" minimum for small reflectors; 8" for large reflectors)
	_____	<b>02</b> = semi-gloss white
	_____	<b>07</b> = silver
	_____	<b>08</b> = semi-gloss black
	_____	<b>F</b> = intermediate hanger, straight assembly
	_____	<b>G</b> = end hanger, straight assembly
	_____	<b>J</b> = intermediate hanger, swivel assembly (up to 45°)
	_____	<b>K</b> = end hanger, swivel assembly (up to 45°)
	_____	<b>S</b> = small reflectors (Style 101, 102, 115 units)
	_____	<b>L</b> = large reflectors (Style 103, 104 units)

**Swivel Pendant: Mounting Conditions**

